

# KARIBAN

**REFERENCE :** K558

**SIZES :** XS\_S\_M\_L\_XL\_XXL\_3XL\_4XL

**COMPOSITION :**

Main fabric : Polyester / Cotton poplin 65/35 - 105 For white colour 65%polyester / 35%cotton

Main fabric : Polyester / Cotton poplin 65/35 - 110 For colours 65%polyester / 35%cotton

**WEIGHT :**

Main fabric : 105 gsm

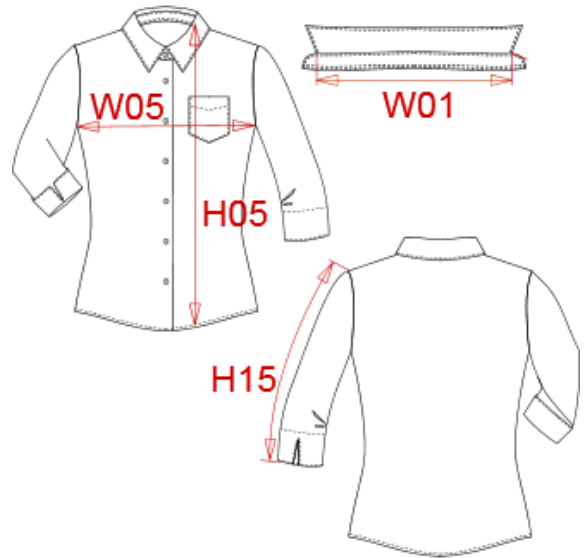
Main fabric : 110 gsm

**FABRIC CONSTRUCTION AND FINISHING :**

Easy Care

**ARTICLE WEIGHT :**

130 gr/pc



DESCRIPTION	
<b>Français :</b>	Chemise manches 3/4 femme
<b>English :</b>	Ladies' 3/4 sleeve shirt
<b>Nederlands :</b>	Damesblouse met 3/4 mouw
<b>Deutsch :</b>	3/4-Arm-Damenbluse
<b>Español :</b>	Camisa con mangas 3/4 para mujer
<b>Italiano :</b>	Camicia donna con maniche 3/4
<b>Português :</b>	Camisa de senhora manga 3/4

COLORS	PANTONE SERIGRAPHIE
White	White
Black	Black
Bright turquoise	638C
Classic red	1945C

MEASUREMENT									
Description	XS	S	M	L	XL	XXL	3XL	4XL	
<b>W01</b> Longueur encolure / Neckline length	37,80	38,55	39,30	40,25	41,15	42,05	42,95	43,85	
<b>H05</b> Hauteur totale / Total height	64,25	65,75	67,25	69,25	71,25	73,25	75,25	77,25	
<b>W05</b> 1/2 largeur poitrine/1/2 chest width	44,50	46,50	48,50	51,50	54,50	57,50	60,50	63,50	
<b>H15</b> Longueur manche / Sleeve length	43,50	44,50	45,50	46,50	47,50	48,50	49,50	50,50	

CARE LABEL				

PACKING	
Box	12 pcs / box All sizes => L:52cm W:34cm H:20cm GW:4.00kg NW:2.70kg